

Appendix: The following images show the User Interface for all the main components of the app

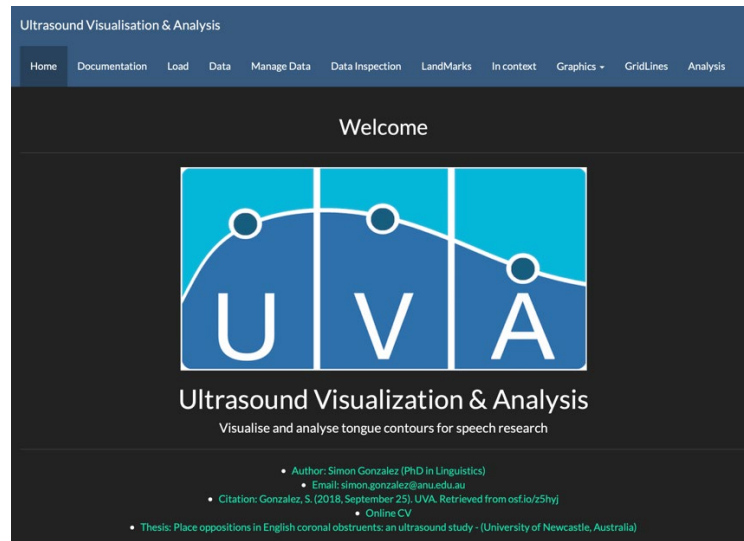


Figure A1. Home Tab

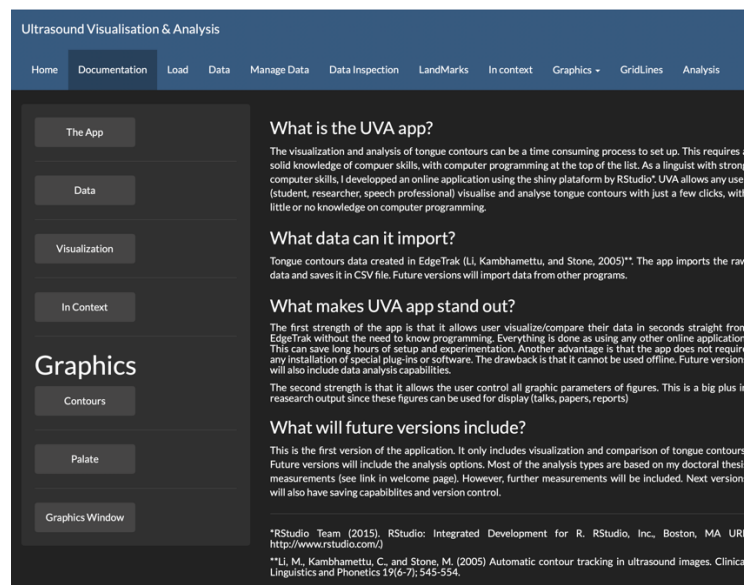


Figure A2. Documentation tab

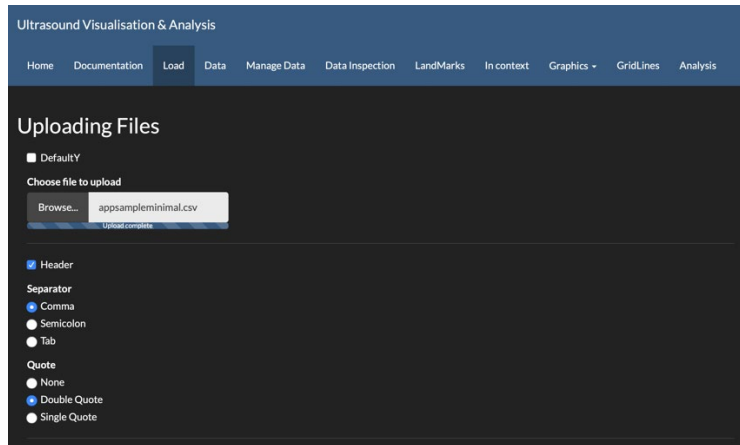


Figure A3. Load Data tab

Ultrasound Visualisation & Analysis

Home Documentation Load Data Manage Data Data Inspection LandMarks In context Graphics GridLines Analysis

Show 10 entries Search:

	speaker	segment	repetition	frame
1	1	pal	1	1
2	1	s	1	18
3	1	s	2	18
4	1	s	3	15
5	1	sh	1	18
6	1	sh	2	19
7	1	sh	3	17

Showing 1 to 7 of 7 entries

Previous 1 Next

Figure A4. Data tab

Ultrasound Visualisation & Analysis

Home Documentation Load Data Manage Data Data Inspection LandMarks In context Graphics GridLines Analysis

Manage Data

Delete selected rows Compare selected rows

Show 10 entries Search:

	speaker	segment	repetition	frame	Select	Actions
1	1	pal	1	1	<input type="checkbox"/>	Delete Modify
2	1	sh	1	1	<input type="checkbox"/>	Delete Modify
3	1	sh	1	2	<input type="checkbox"/>	Delete Modify
4	1	sh	1	3	<input type="checkbox"/>	Delete Modify
5	1	sh	1	4	<input type="checkbox"/>	Delete Modify
6	1	sh	1	5	<input type="checkbox"/>	Delete Modify
7	1	sh	1	6	<input type="checkbox"/>	Delete Modify

Figure A5. Manage Data tab

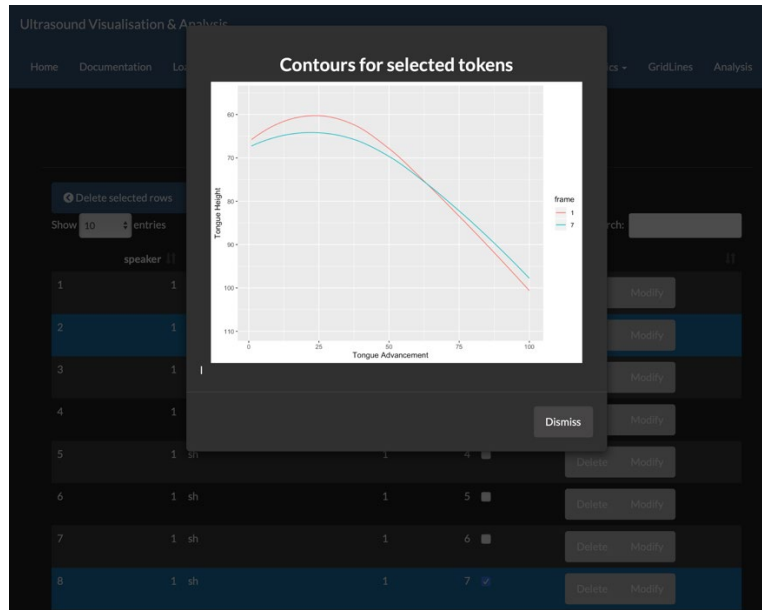


Figure A6. Modify Data within Manage Data tab

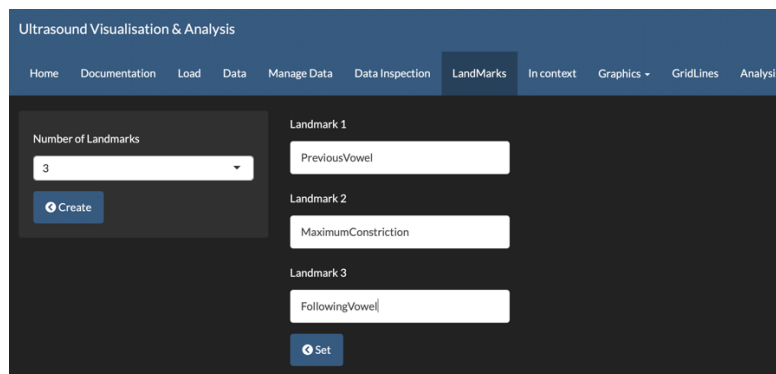


Figure A7. Landmarks tab

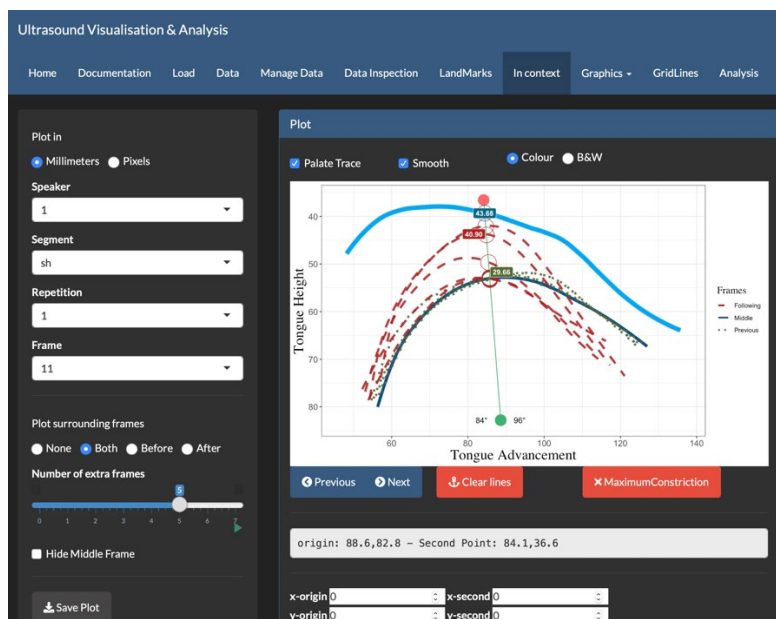


Figure A8. In Context tab

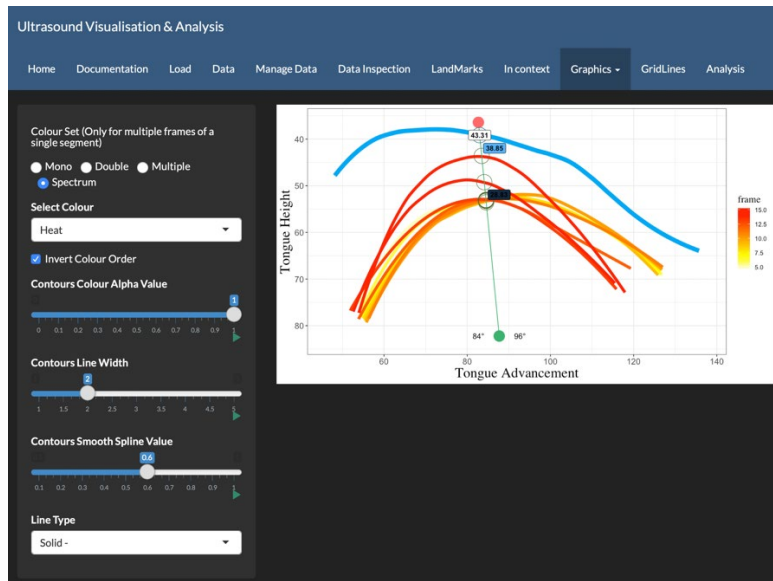


Figure A9. Graphics tab (Contours)

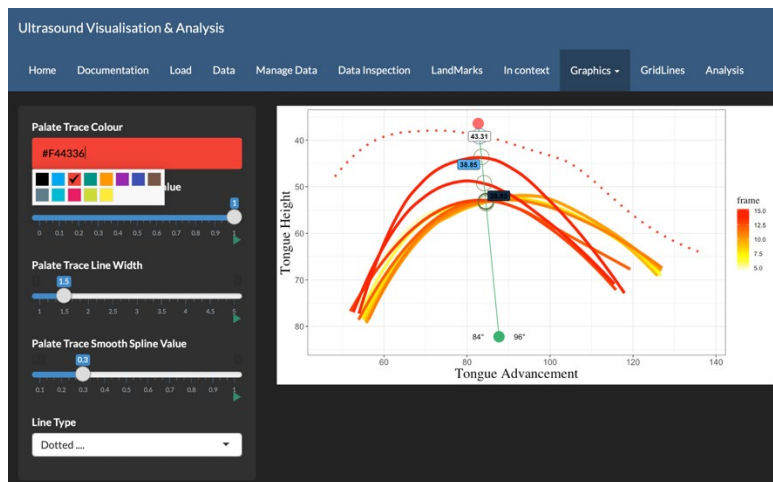


Figure A10. Graphics tab (Palate Trace)

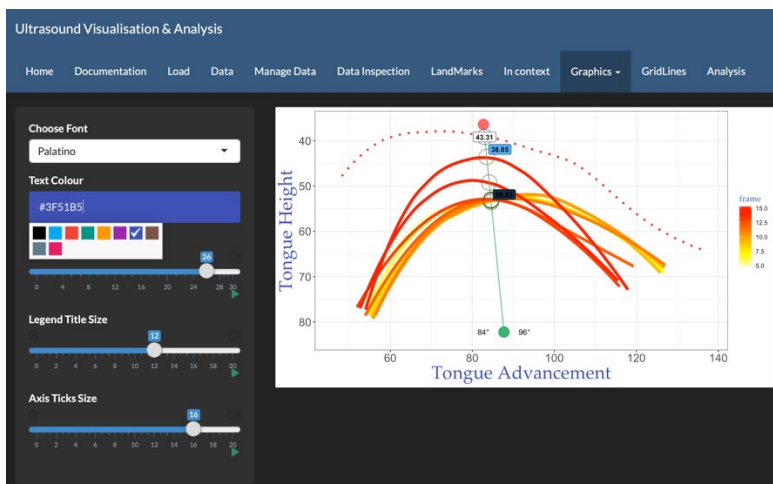


Figure A11. Graphics tab (Text)

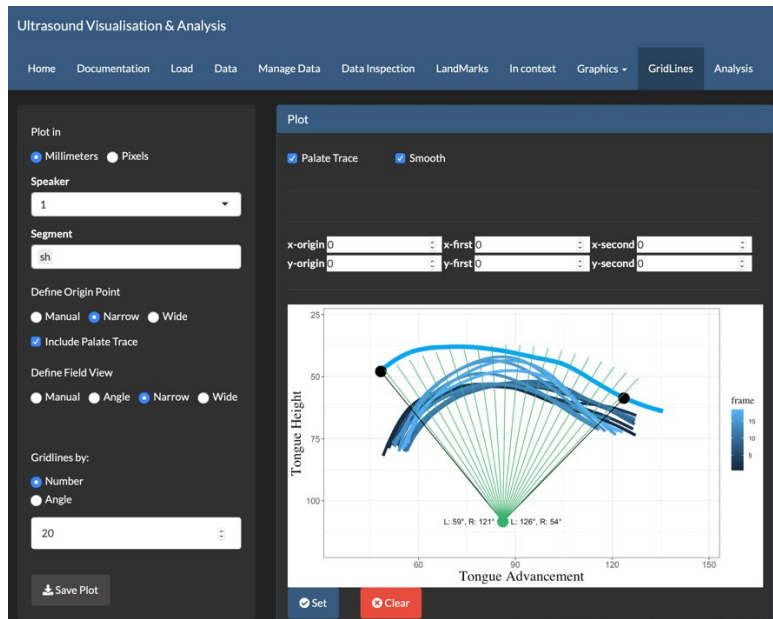


Figure A12. Gridlines tab

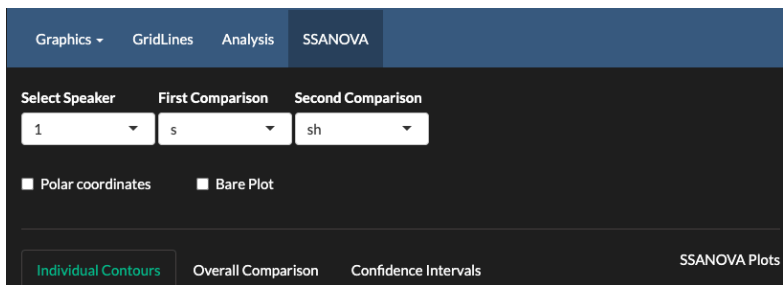


Figure A13. SSANOVA tab