

Appendix: Stimuli and supplemental figures

Table A1. Stimuli for production experiment arranged by vowel context with word count in SUBTLEX corpus (Cai & Brysbaert, 2010).

Vowel	/n/ coda			/ŋ/ coda		
	Hanzi	IPA	Count	Hanzi	IPA	Count
/i/	山林 ‘mountain forest’	ʃan˥.lin˥	23	山陵 ‘lofty mountains’	ʃan˥.liŋ˥	1
	全民 ‘all the people’	t͡ɕʰyɛn˥.min˥	60	全名 ‘full name’	t͡ɕʰyɛn˥.miŋ˥	41
	押金 ‘deposit’	ia˥.t͡ɕin˥	55	压惊 ‘help sb. recover’	ia˥.t͡ɕiŋ˥	8
	风琴 ‘organ’	fəŋ˥.t͡ɕʰin˥	36	风情 ‘amorous feelings’	fəŋ˥.t͡ɕʰiŋ˥	115
/a/	青山 ‘green hills’	t͡ɕʰiŋ˥.ʃan˥	32	轻伤 ‘minor wound’	t͡ɕʰiŋ˥.ʃaŋ˥	30
	出产 ‘yield’	t͡ɕʰu˥.t͡ɕʰan˥	43	出厂 ‘out of the factory’	t͡ɕʰu˥.t͡ɕʰaŋ˥	18
	隐含 ‘imply’	in˥.han˥	18	引航 ‘pilot a ship’	in˥.haŋ˥	4
	造反 ‘rebel’	t͡sau˥.fan˥	73	造访 ‘pay a visit’	t͡sau˥.faŋ˥	60
/ə/	人参 ‘ginseng’	ʤən˥.ʃən˥	30	人声 ‘voice’	ʤən˥.ʃəŋ˥	26
	解闷 ‘amuse’	t͡ɕiɛ˥.mən˥	20	解梦 ‘dream reading’	t͡ɕiɛ˥.məŋ˥	2
	清真 ‘Islamic’	t͡ɕʰiŋ˥.t͡ɕən˥	7	清蒸 ‘steamed’	t͡ɕʰiŋ˥.t͡ɕəŋ˥	5
	水深 ‘depth (of water)’	ʃuei˥.ʃən˥	22	水声 ‘water sounds’	ʃuei˥.ʃəŋ˥	30
/ua/	机关 ‘mechanism’	t͡ɕi˥.kuan˥	237	激光 ‘laser’	t͡ɕi˥.kuaŋ˥	288
	经传 ‘classics’	t͡ɕiŋ˥.t͡ɕuan˥	14	精壮 ‘strong’	t͡ɕiŋ˥.t͡ɕuaŋ˥	5
	高官 ‘manager’	kau˥.kuan˥	51	高光 ‘highlight’	kau˥.kuaŋ˥	2
	旁观 ‘look on’	pʰaŋ˥.kuan˥	78	膀胱 ‘bladder’	pʰaŋ˥.kuaŋ˥	56

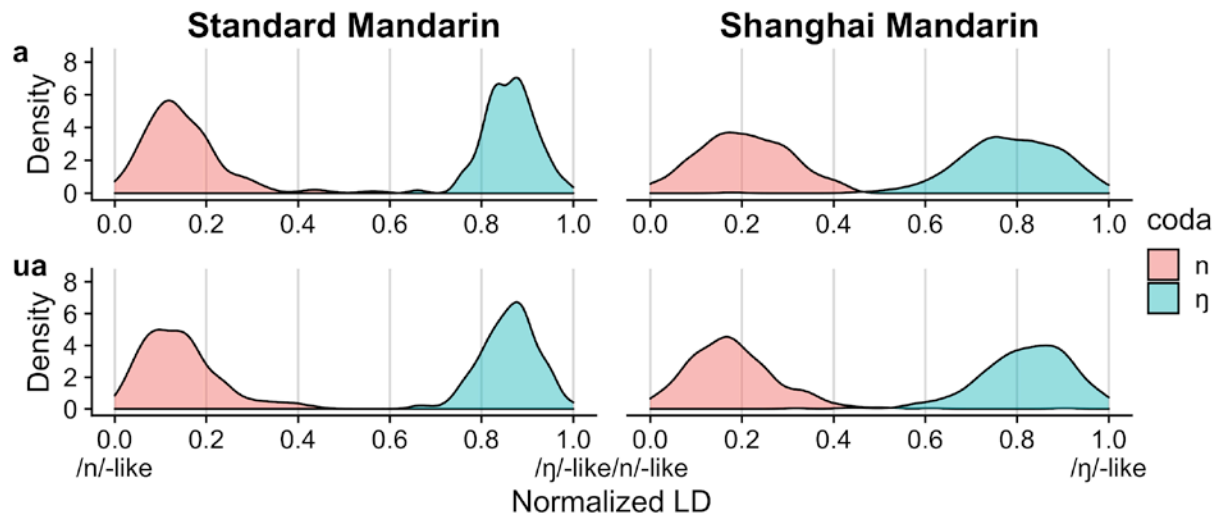


Figure A1. Distribution of LD values for nasal codas in the unpooled /a/ and /ua/ contexts for the control group (Standard Mandarin, left) and test group (Shanghai Mandarin, right).

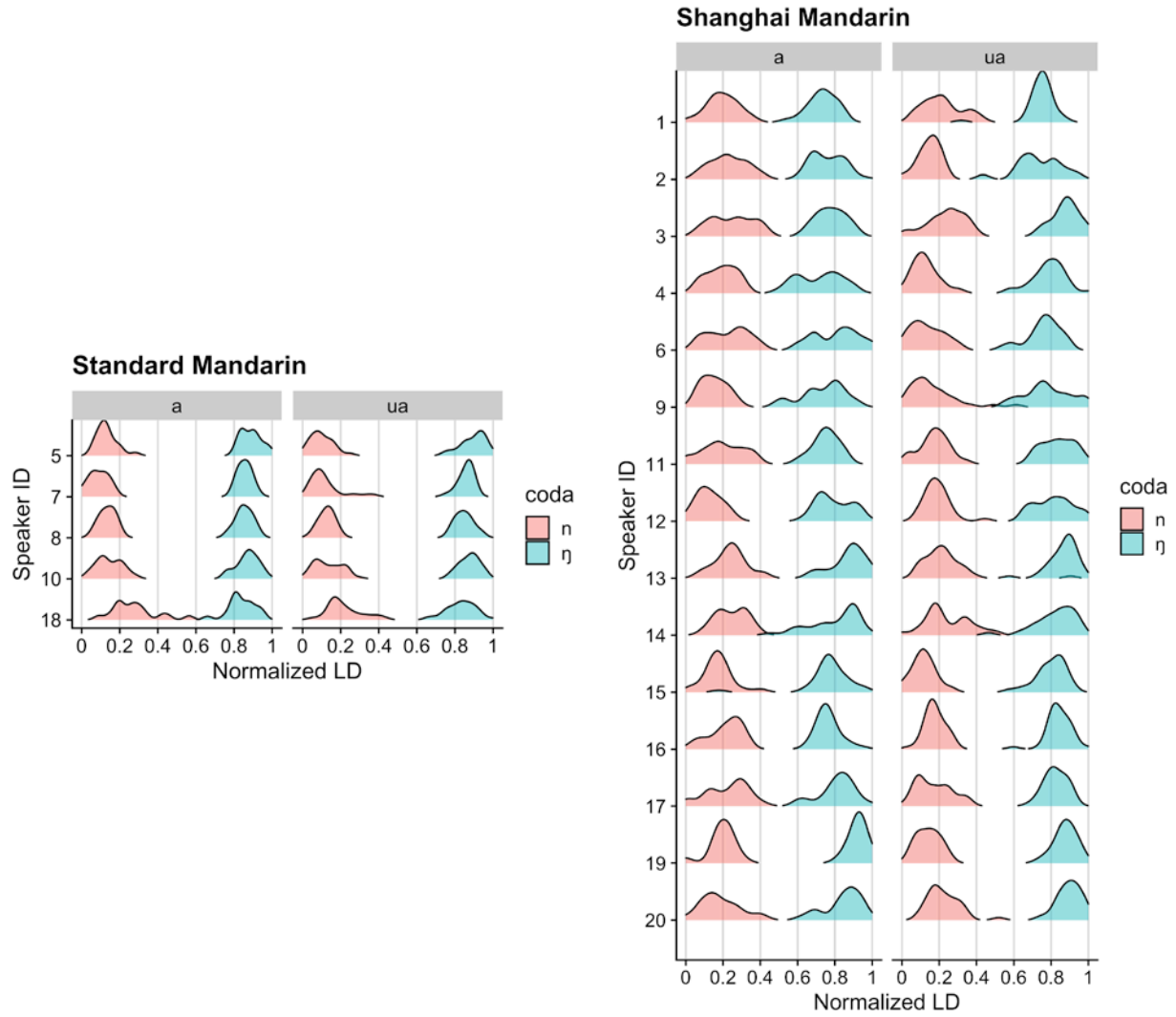


Figure A2. Distribution of LD values for nasal codas in the unpooled /a/ and /ua/ contexts for each individual in the Standard Mandarin (left) and Shanghai Mandarin (right) groups. Trivially low probability density values (below 0.01) are not plotted for legibility.

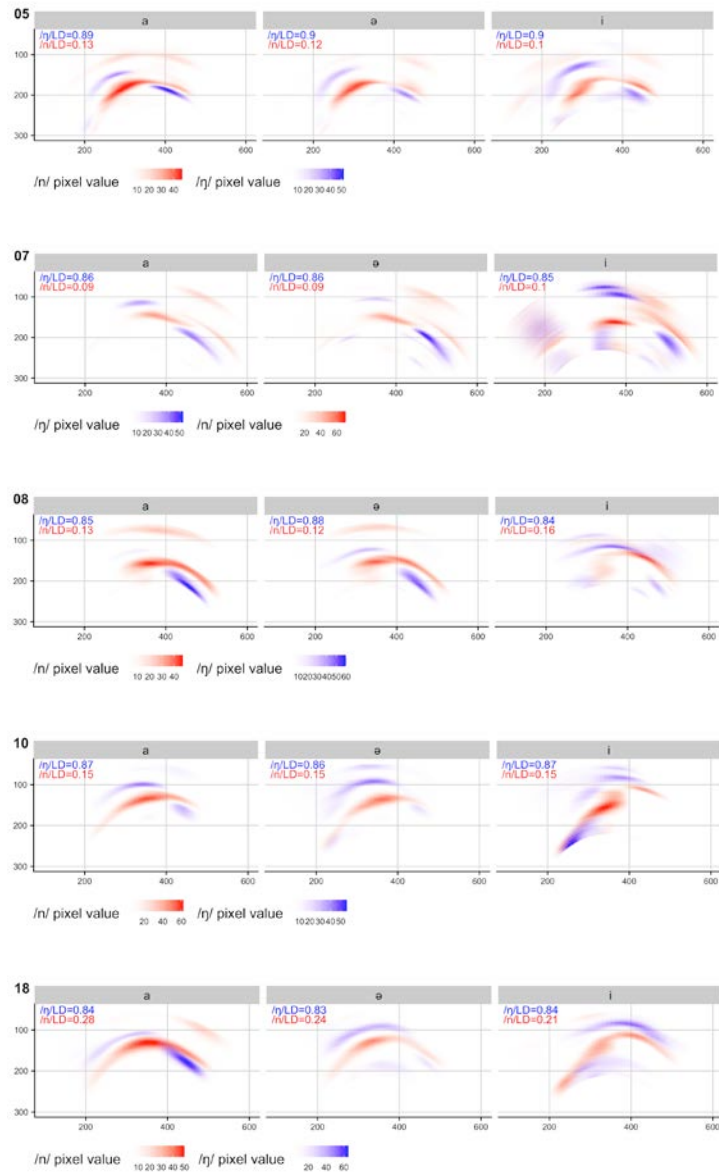


Figure A3. Eigentongue reconstructions by vowel and coda type for all individual control speakers. Average LD score for each reconstructed articulation appears at upper left of each plot.

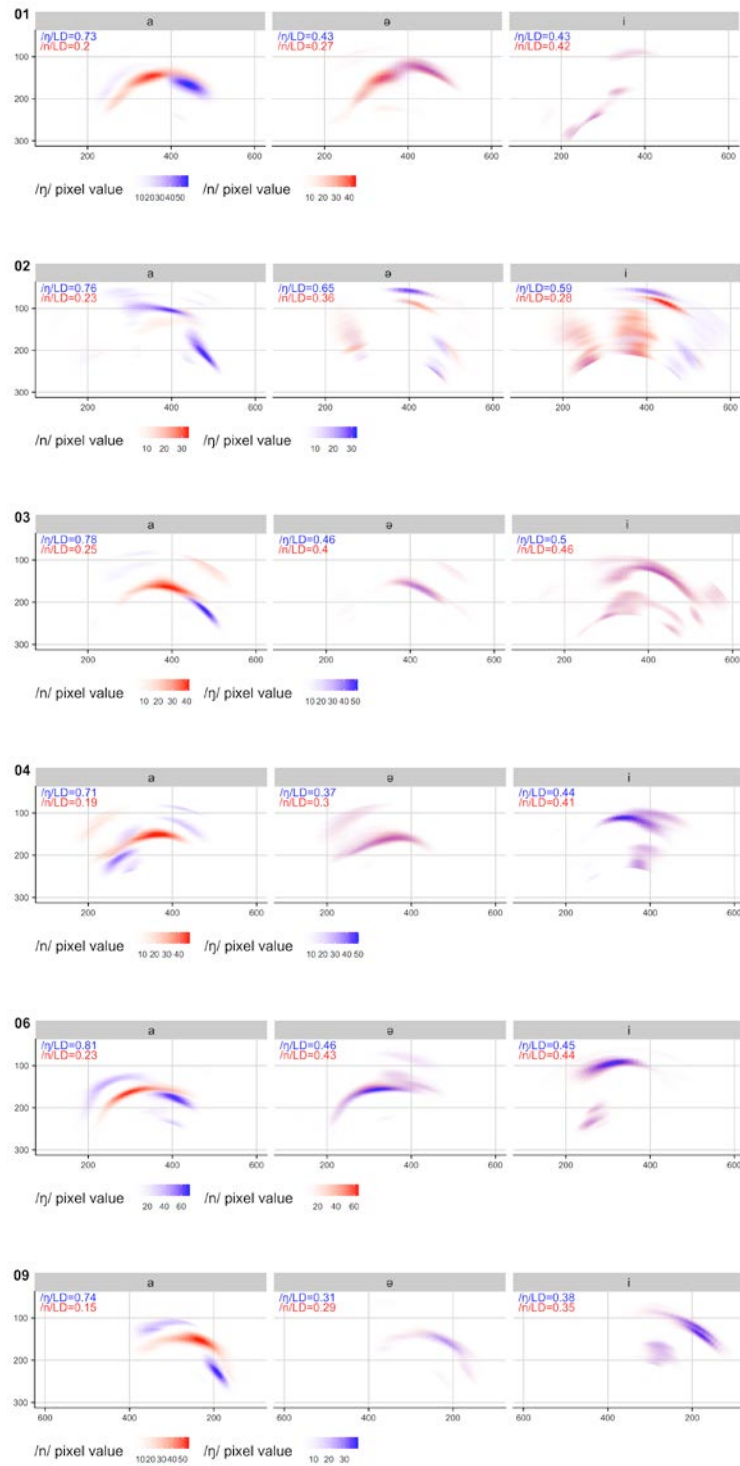


Figure A3. (continued)

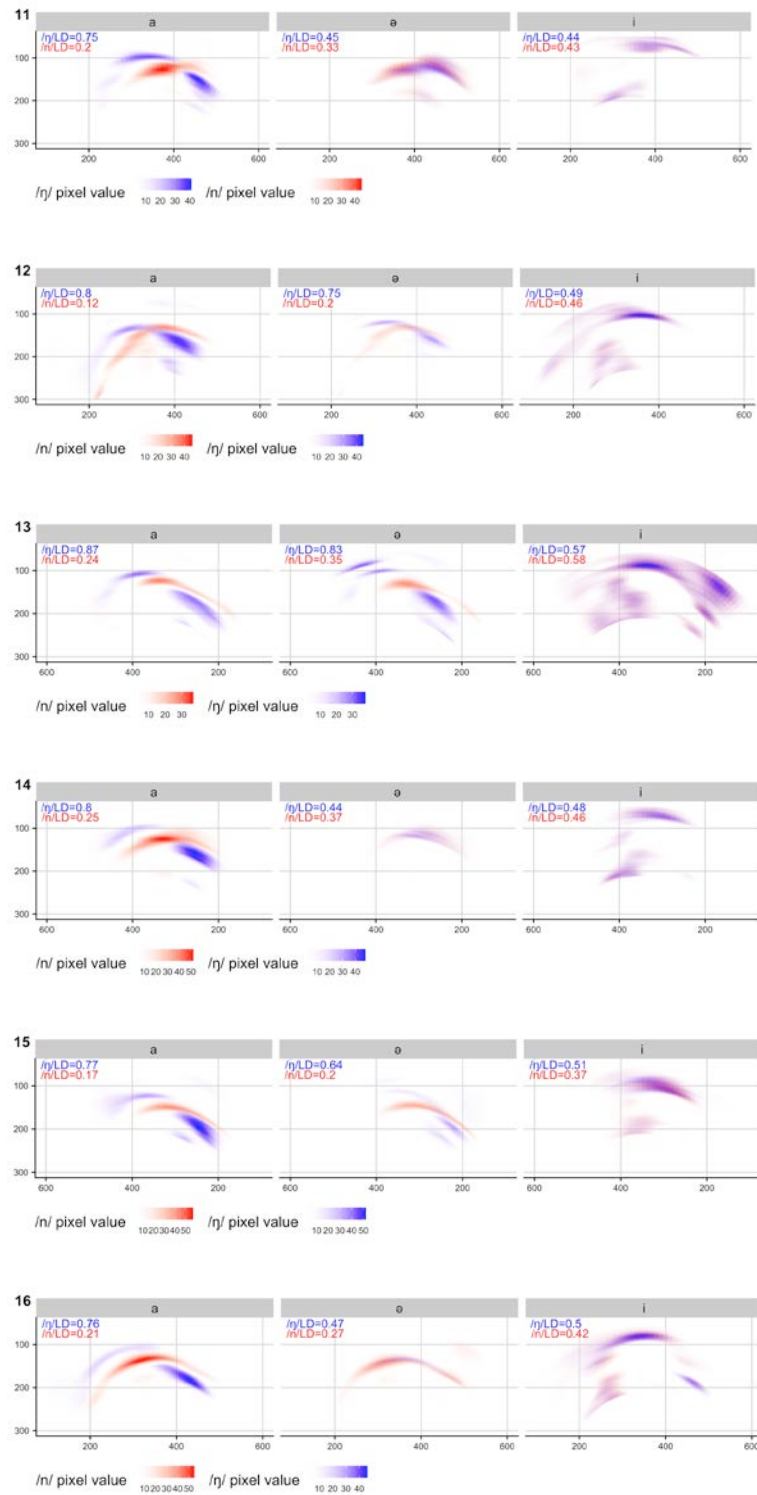


Figure A3. (continued)

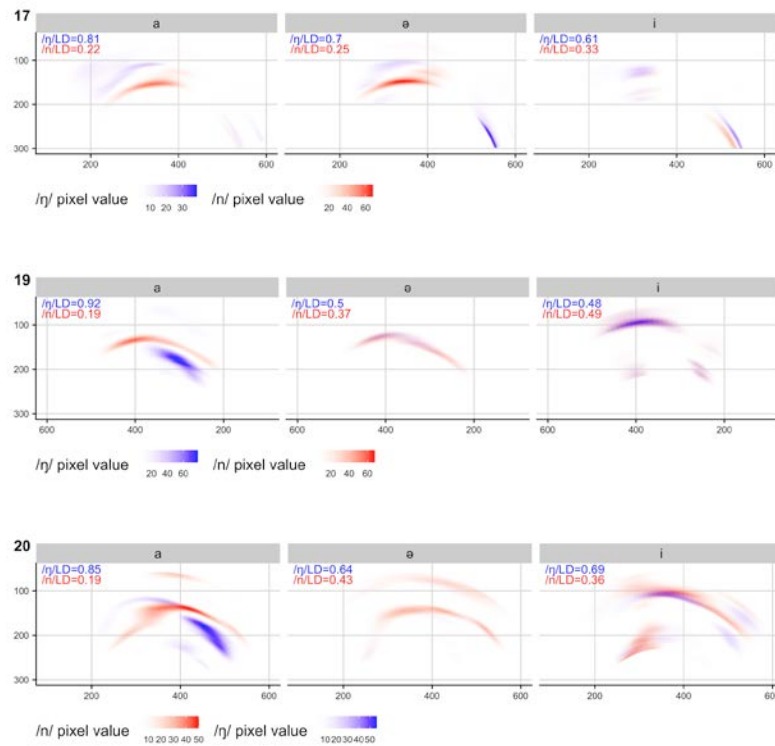


Figure A4. Eigentongue reconstructions by vowel and coda type for all individual Shanghai Mandarin speakers. Average LD score for each reconstructed articulation appears at upper left of each plot.

References

Cai, Q. & Brysbaert, M. (2010) SUBTLEX-CH: Chinese word and character frequencies based on film subtitles. *PLoS ONE*, 5(6), paper e10729. doi: 10.1371/journal.pone.0010729